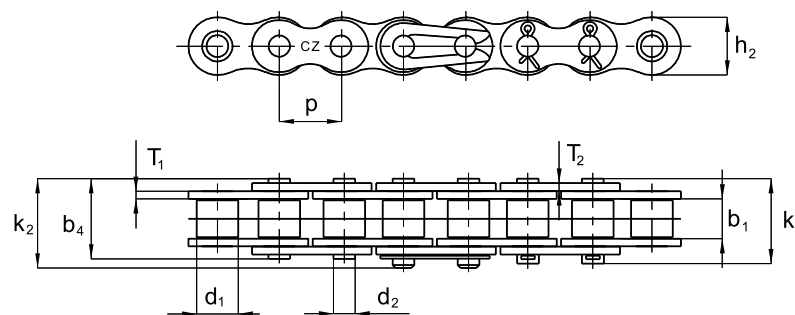




SIMPLEX ROLLER CHAINS

European design according to ČSN 02 3311, DIN 8187 and ISO 606

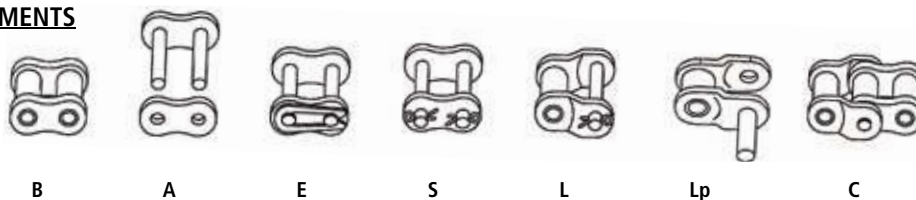


ISO DIN ČSN	PITCH	INSIDE WIDTH	ROLLER DIAMETER	PIN DIAMETER	PIN LENGHT	CONNECT. PIN LENGHT	CONNECT. PIN LENGHT	INNER PLATE WIDTH	INNER PLATE THICKNESS	OUTER PLATE THICKNESS	BEARING AREA	WEIGHT	BREAKING LOAD	CONNECTING ELEMENTS						
														B	A	E	S	L	LP	C
	p	b1 min.	d1 max.	d2 max.	b4 max.	k1 max.	k2 max.	h2 max.	T1	T2	S	q	FB min.							
	mm	mm	mm	mm	mm	mm	mm	mm	mm	mm	mm ²	kg/m	N							
05 B-1	8,00	3,00	5,00	2,31	7,9		9,15	7,2	0,8	0,8	11	0,19	4620	•	•	•			•	
06 B-1*	9,525	5,72	6,35	3,28	12,4		14	8,2	1,2	1	28	0,4	9345	•	•	•		•	•	
081	12,7	3,3	7,75	3,66	9,2		10,8	9,9	1	1	21	0,3	8200	•	•	•		•	•	
08 B-1**	12,7	7,75	8,51	4,45	16,4	19,4	18,25	11,8	1,6	1,4	50,3	0,7	18690	•	•	•	•	•	•	
101	15,875	6,48	10,16	5,08	15,6		17,2	14,5	1,6	1,6	51,05	0,8	23310	•	•	•		•	•	
10 B-1**	15,875	9,65	10,16	5,08	18,7	21,5	20,35	14,5	1,6	1,6	67,3	0,9	23310	•	•	•	•	•	•	
12 B-1**	19,05	11,68	12,07	5,72	22,3	24,5	24	16,1	1,8	1,8	89,35	1,22	30345	•	•	•	•	•	•	
16 B-1**	25,4	17,02	15,88	8,28	35,3	38,2	37,0	21	3,5	3	206,17	2,67	65000	•	•	•	•	•	•	

* ONLY WITH STRAIGHT PLATES

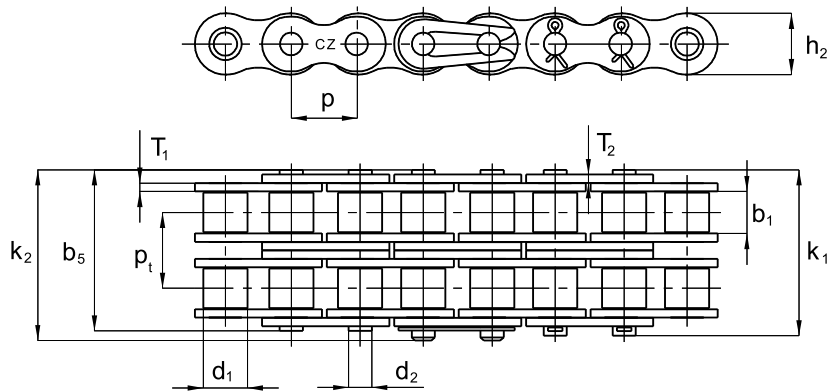
** ALSO WITH STRAIGHT PLATES (THE WIDTH OF OUTER PLATE CORRESPONDS WITH THE WIDTH OF INNER PLATE - h2)

CONNECTING ELEMENTS



DUPLEX ROLLER CHAINS

European design according to ČSN 02 3311, DIN 8187 and ISO 606



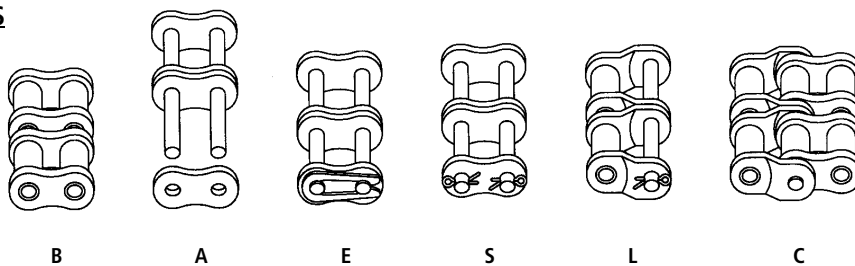
ISO DIN ČSN	PITCH	INSIDE WIDTH	ROLLER DIAMETER	PIN DIAMETER	PIN LENGHT	CONNECT. PIN LENGHT	CONNECT. PIN LENGHT	INNER PLATE WIDTH	INNER PLATE THICKNESS	OUTER PLATE THICKNESS	TRANS- VER. PITCH	BEARING AREA	WEIGHT	BREAKING LOAD	CONNECTING ELEMENTS					
															B	A	E	S	L	C
	p	b_1 min.	d_1 max.	d_2 max.	b_5 max.	k_1 max.	k_2 max.	h_2 max.	T_1	T_2	p_t	S	q	FB min.						
	mm	mm	mm	mm	mm	mm	mm	mm	mm	mm	mm	mm ²	kg/m	N						
05 B-2	8,0	3,00	5,00	2,31	13,55		14,75	7,20	0,80	0,80	5,64	22,00	0,34	8 000	•	•	•			
06 B-2*+	9,525	5,72	6,35	3,28	22,65		24,25	8,20	1,20	1,00	10,24	56,00	0,53	17 745	•	•	•		•	•
08 B-2**	12,7	7,75	8,51	4,45	30,45	33,30	32,15	11,80	1,60	1,40	13,92	100,60	1,37	32 655	•	•	•	•	•	•
10 B-2**	15,875	9,65	10,16	5,08	35,30	38,10	36,95	14,50	1,60	1,60	16,59	134,60	1,80	46 726	•	•	•	•	•	•
12 B-2**	19,05	11,68	12,07	5,72	41,75	44,00	43,80	16,10	1,80	1,80	19,46	178,70	2,43	60 690	•	•	•	•	•	•
16 B-2**	25,4	17,02	15,88	8,28	67,30	70,20	69,10	21,00	3,50	3,00	31,88	412,34	5,30	130 000	•	•	•	•	•	•

*ONLY WITH STRAIGHT PLATES

**ALSO WITH STRAIGHT PLATES (THE WIDTH OF OUTER PLATE CORRESPONDS WITH THE WIDTH OF INNER PLATE - h_2)

+ MIDDLE LINK PLATE HAS ONE SOLID PLATE

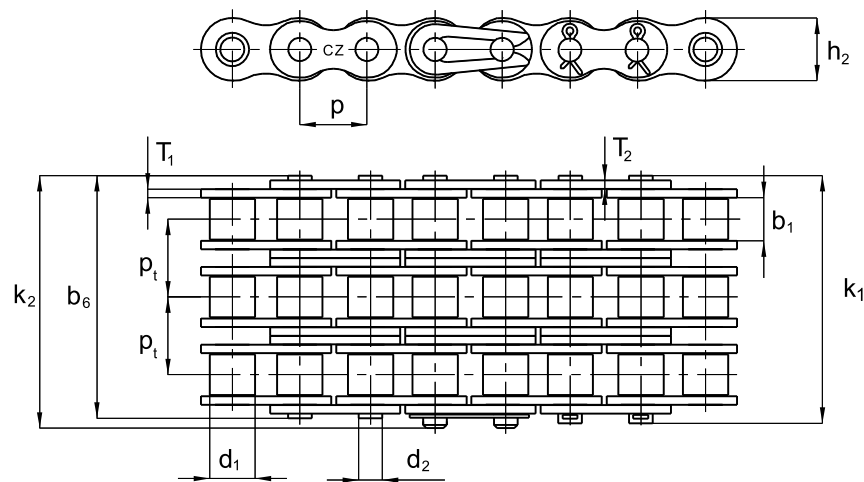
CONNECTING ELEMENTS





TRIPLEX ROLLER CHAINS

European design according to ČSN 02 3311, DIN 8187 and ISO 606



ISO DIN ČSN	PITCH	INSIDE WIDTH	ROLLER DIAMETER	PIN DIAMETER	PIN LENGHT	CONNECT. PIN LENGHT.	CONNECT. PIN LENGHT.	INNER PLATE WIDTH	INNER PLATE THICKNESS	OUTER PLATE THICKNESS	TRANS- VER. PITCH	BEARING AREA	WEIGHT	BREAKING LOAD	CONNECTING ELEMENTS					
															B	A	E	S	L	C
	p	b1 min.	d1 max.	d2 max.	b6 max.	k1 max.	k2 max.	h2 max.	T1	T2	pt	S	q	FB min.						
	mm	mm	mm	mm	mm	mm	mm	mm	mm	mm	mm	mm ²	kg/m	N						
06 B-3*+	9,525	5,72	6,35	3,28	32,90		34,55	8,20	1,20	1,00	10,24	84,00	1,12	26 145	•	•	•		•	•
08 B-3**	12,7	7,75	8,51	4,45	44,25	47,20	46,20	11,80	1,60	1,40	13,92	150,80	2,04	46 725	•	•	•	•	•	•
10 B-3**	15,875	9,65	10,16	5,08	51,90	54,70	53,55	14,50	1,60	1,60	16,59	201,90	2,70	70 035	•	•	•	•	•	•
12 B-3**	19,05	11,68	12,07	5,72	61,25	63,50	63,40	16,10	1,80	1,80	19,46	268,05	3,62	91 035	•	•	•	•	•	•
16 B-3**	25,4	17,02	15,88	8,28	99,10	102,00	100,80	21,00	3,50	3,00	31,88	618,50	7,93	195 000	•	•	•	•	•	•

* ONLY WITH STRAIGHT PLATES

** ALSO WITH STRAIGHT PLATES (THE WIDTH OF OUTER PLATE CORRESPONDS WITH THE WIDTH OF INNER PLATE - h₂)

+ MIDDLE LINK PLATE CONTAINS ONE SOLID PLATE

IN CASE OF REQUEST IS POSSIBLE TO PRODUCE ALSO 4, 5, 6, ROW CHAINS

CONNECTING ELEMENTS

