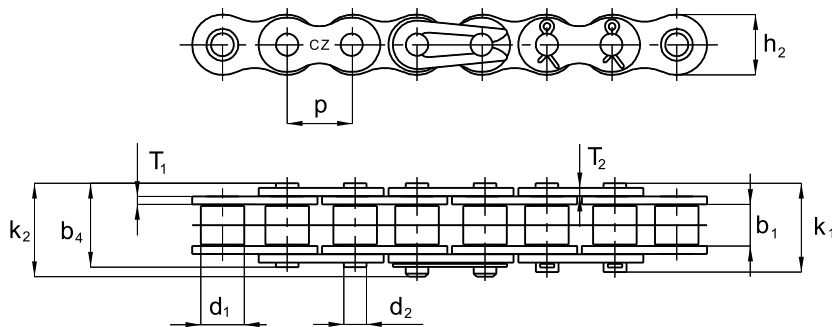


## SIMPLEX ROLLER CHAINS

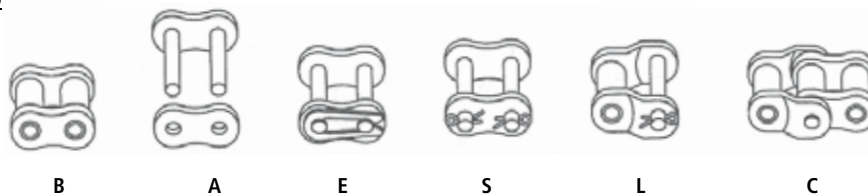
American design according to ČSN 02 3311,  
DIN 8188, ISO 606 and ASME B 29.1M



ISO DIN ČSN	TRADE MARK ČZ	PITCH p	INSIDE WIDTH b1 min.	ROLLER DIAMETER d1 max.	PIN DIAMETER d2 max.	PIN LENGHT b4 max.	CONNECT. PIN LENGHT		INNER PLATE WIDTH h2 max.	INNER PLATE THICKNESS T1	OUTER PLATE THICKNESS T2	BEARING AREA S	WEIGHT q	BREAKING LOAD FB min. N	CONNECTING ELEMENTS					
							k1 max.	k2 max.							B	A	E	S	L	C
08 A-1	ČZ 40	12,7	7,85	7,95	3,96	16,40	19,00	17,70	12,00	1,50	1,50	44,23	0,68	17 500	•	•	•	•	•	•
	08 A-H	12,7	7,85	7,95	3,96	18,20	21,80	19,50	12,00	2,00	2,00	47,52	0,75	20 000	•	•	•	•		
10 A-1	ČZ 50	15,875	9,53	10,16	5,08	20,10	22,90	21,70	14,50	2,00	2,00	70,10	0,82	27 200	•	•	•	•	•	•
	10 A-H	15,875	9,53	10,16	5,08	21,60	24,50	23,30	14,50	2,40	2,40	74,17	1,17	32 600	•	•	•	•		
12 A-1**	ČZ 60	19,05	12,70	11,91	5,94	25,40	28,30	27,00	17,70	2,40	2,40	105,40	1,58	32 655	•	•	•	•	•	•
	12 A-H	19,05	12,70	11,91	5,94	28,85	31,70	30,60	17,70	3,20	3,20	115,83	1,92	40 000	•	•	•	•		

\*\* ALSO WITH STRAIGHT PLATES (THE WIDTH OF OUTER PLATE CORRESPONDS WITH THE WIDTH OF INNER PLATE - h2)

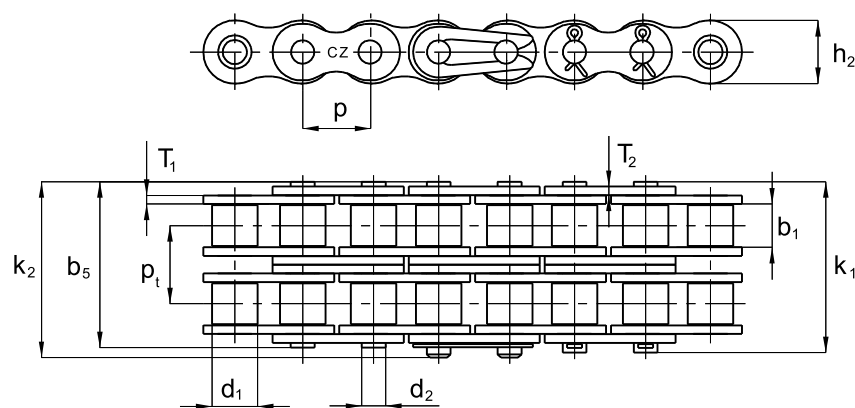
### CONNECTING ELEMENTS





## DUPLEX ROLLER CHAINS

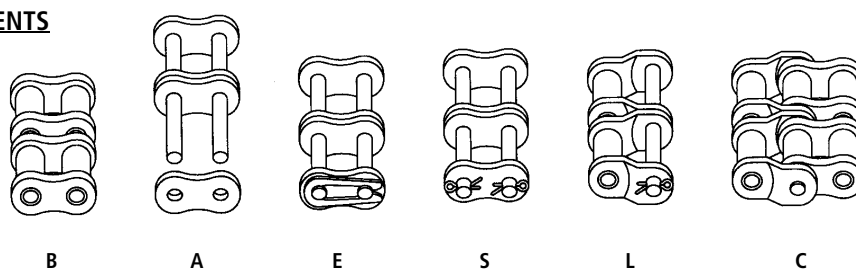
American design according to ČSN 02 3311,  
DIN 8188, ISO 606 and ASME B 29.1M



ISO DIN ČSN	TRADE MARK ČZ	PITCH p	INSIDE WIDTH b1 min.	ROLLER DIAMETER d1 max.	PIN DIAMETER d2 max.	PIN LENGTH b5 max.	CONNECT. PIN LENGTH k1 max.	CONNECT. PIN LENGTH k2 max.	INNER PLATE WIDTH h2 max.	INNER PLATE THICKNESS T1	OUTER PLATE THICKNESS T2	TRANS- VER. PITCH pt	BEARING AREA S	WEIGHT q	BREAKING LOAD FB min. N	CONNECTING ELEMENTS					
																B	A	E	S	L	C
08 A-2	ČZ 40	12,7	7,85	7,95	3,96	30,70	33,40	32,00	12,00	1,50	1,50	14,38	88,46	1,31	28 200	•	•	•	•	•	•
10 A-2	ČZ 50	15,875	9,53	10,16	5,08	38,20	39,00	39,85	14,50	2,00	2,00	18,11	140,20	2,06	54 400	•	•	•	•	•	•
12 A-2**	ČZ 60	19,05	12,70	11,91	5,94	48,20	51,20	49,80	17,70	2,40	2,40	22,78	210,80	3,15	65 415	•	•	•	•	•	•

\*\*ALSO WITH STRAIGHT PLATES ( THE WIDTH OF OUTER PLATE CORRESPONDS WITH THE WIDTH OF INNER PLATE - h2)

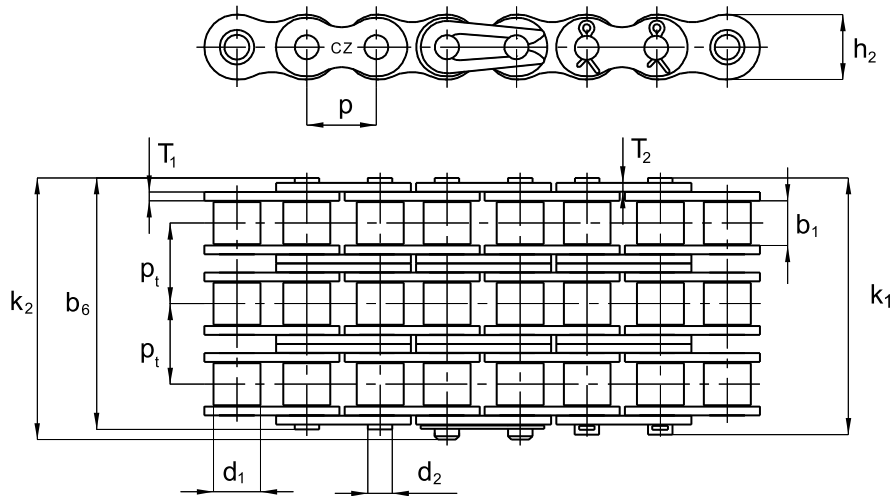
### CONNECTING ELEMENTS





## TRIPLEX ROLLER CHAINS

American design according to ČSN 02 3311, DIN 8188, ISO 606 and ASME B 29.1M



ISO ČSN DIN	TRADE MARK ČZ	PITCH	INSIDE WIDTH	ROLLER DIAMETER	PIN DIAMETER	PIN LENGTH	CONNECT. PIN LENGTH	CONNECT. PIN LENGTH	INNER PLATE WIDTH	INNER PLATE THICKNESS	OUTER PLATE THICKNESS	TRANS- VER. PITCH	BEARING AREA	WEIGHT	BREAKING LOAD	CONNECTING ELEMENTS					
																B	A	E	S	L	C
		p	b1 min.	d1 max.	d2 max.	b6 max.	k1 max.	k2 max.	h2 max.	T1	T2	pt	S	q	FB min.						
		mm	mm	mm	mm	mm	mm	mm	mm	mm	mm	mm	mm <sup>2</sup>	kg/m	N						
08 A-3	ČZ 40	12,7	7,85	7,95	3,96	45,10	47,80	46,40	12,00	1,50	1,50	14,38	132,70	1,96	42 300	•	•	•	•	•	
10 A-3	ČZ 50	15,875	9,53	10,16	5,08	56,30	57,00	57,90	14,50	2,00	2,00	18,11	210,30	2,00	81 600	•	•	•	•	•	
12 A-3**	ČZ 60	19,05	12,70	11,91	5,94	71,60	74,50	73,40	17,70	2,40	2,40	22,78	316,30	4,53	98 070	•	•	•	•	•	•

\*\*ALSO WITH STRAIGHT PLATES (THE WIDTH OF OUTER PLATE CORRESPONDS WITH THE WIDTH OF INNER PLATE - h2)  
IN CASE OF REQUEST IS POSSIBLE TO PRODUCE ALSO 4, 5, 6, ROW CHAINS

### CONNECTING ELEMENTS

